

2021-22 COMMUNITY REPORT



SHUSWAP
COMMUNITY
FOUNDATION

LAND ACKNOWLEDGEMENT

The Shuswap Community Foundation works within Secwépemc'ulucw, the unceded and ancestral home of the Secwepemc People whose deep connection to this land continues to this day.

THROUGH STRATEGIC PHILANTHROPY, WE TACKLE OUR COMMUNITY'S MOST PRESSING ISSUES WITH BOLD SOLUTIONS. WE BELIEVE THAT WITH A STRONG FOUNDATION, ANYTHING WE DREAM IS POSSIBLE, TOGETHER.

OUR VISION:

CONNECTING THE PEOPLE OF THE SHUSWAP WITH THE CAUSES THAT MATTER IN OUR COMMUNITIES

OUR MISSION:

To inspire community giving through permanent endowment funds, foster donor confidence and community trust through responsible management and investment, honour memories and support community causes through grants.



Dear Foundation Supporters,

2022 has presented us with another year of instability. The ongoing uncertainty of a global pandemic, a war in Europe, increasing social and political factionalism, and the rising impact of climate change.

Against this background, Shuswap Community Foundation continued to build relationships and support the people and organizations that make a difference in our communities. With nearly \$500,000 granted in 2021-22, the Foundation is working hard to support those individuals and organizations who develop community resiliency, support those in need, build trust and bring people together.

Your belief in what we do is reflected in the tremendous support we have received in the last year, \$533,000 in donations, 8 new Funds created, and a growing list of partnerships to serve communities across the Shuswap.

Unfortunately, all of these successes and hard work are not reflected in our fund performance for the last fiscal year, the SCF portfolio finished our 2021-22 fiscal year down 11.27%.

In a world that looks increasingly fragile and challenged to deal with existential threats to our health, environmental, social and economic future, we at Shuswap Community Foundation believe that living up to our purpose of “connecting people of the Shuswap with the causes that matter in our communities” is the only way to reinforce the trust that we need to succeed in a sustainable manner.





On behalf of SCF Board and staff, we thank you for your trust and ongoing support.

Roger Parenteau, Manager, Shuswap Community Foundation

THE WORK WE DO

-  South Shuswap
-  Falkland-Salmon Valley-Ranchero
-  Sicamous-Malakwa
-  North Shuswap-Seymour Arm

Other

-  Member Municipality
-  First Nations Reserve

PLEASE NOTE - This map does not accurately depict the entirety of First Nations Reserves within our boundaries.



Social
Equality
\$46,174



Environment
\$18,941



Community
\$52,023



Education
\$51,031



Arts &
Culture
\$42,897



Heritage
\$25,848



Seniors
\$25,804



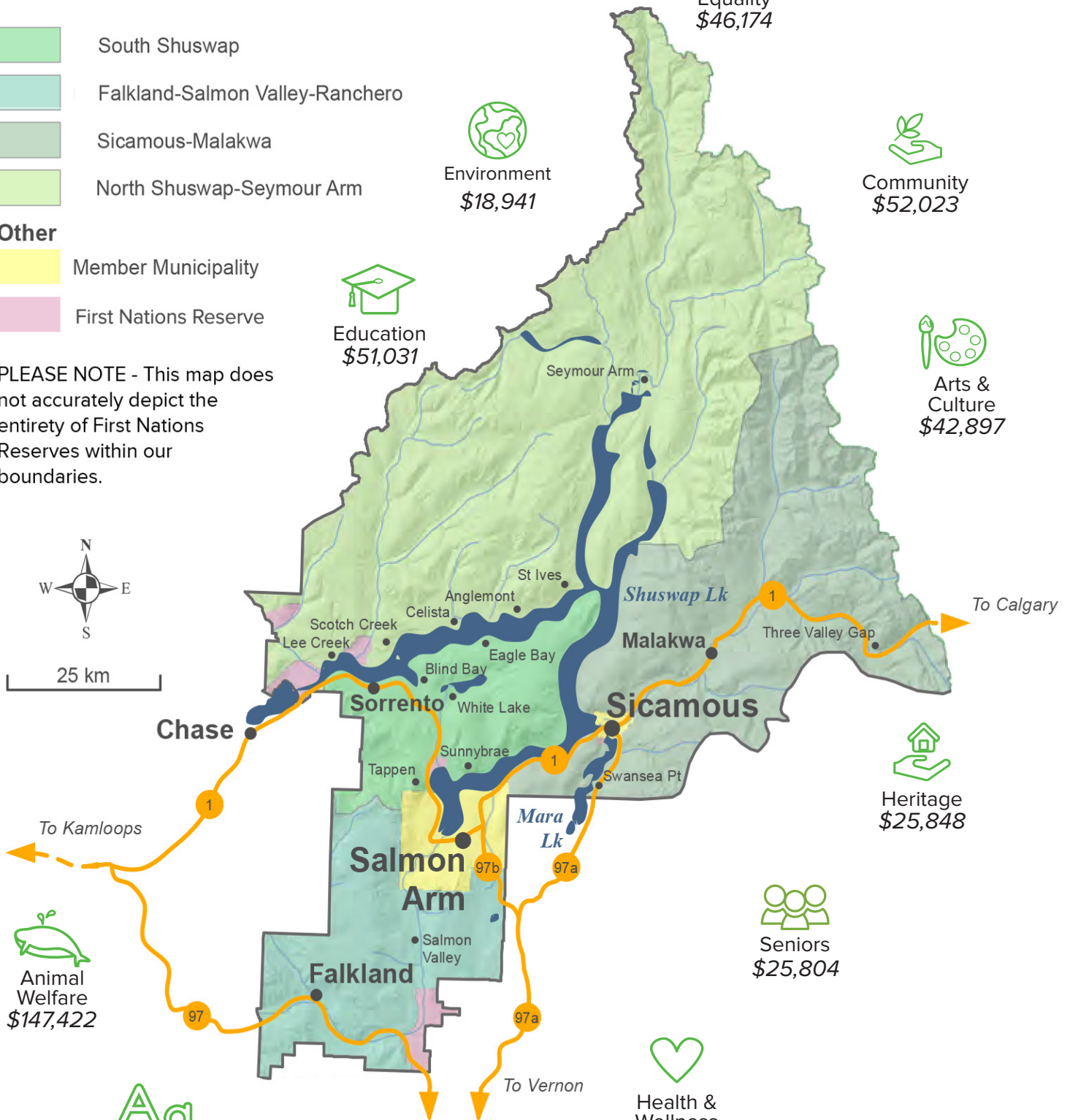
Health &
Wellness
\$31,714



Animal
Welfare
\$147,422



Youth
\$52,078



Please contact us for information about how to establish your fund with Shuswap Foundation

NEW FUNDS 2021 - 22

*Dan and Monica Kuzek
Family Endowment - Youth,
Education, Arts and culture
and Health and wellness*



*Eagle Bay Community Association
Endowment - income available for
distribution from the Fund will be
disbursed annually to the Society to
be used in support of its operations
and capital requirements.*

*Jeff, Anne, and Vanessa
Nakagawa Endowment -
Unrestricted Fund - Income
may be used to address ever-
changing community need. Now,
and forever.*



*Salmon Arm Metis
Association Bursary
Fund - Income is to fund
two bursaries to students
graduating from Salmon Arm
Senior Secondary school
who are citizens of the Metis
Nation of British Columbia
and members of the Salmon
Arm Metis Association.*

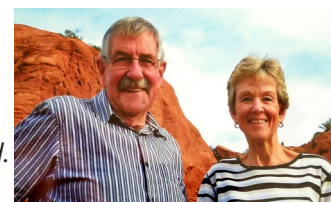


*Charlotte Hunter Endowment - to
provide a scholarship to a female
student graduating from within SD
#83 who has participated in the
Shuswap (Wa'ya Spirit) District Girl
Guides program.*



*Fifth Avenue Seniors' Centre Endowment - income
available for distribution from the Fund will be
disbursed annually to the Society to be used in
support of its operations and capital requirements.*

*Sue and Ron Arnold
Endowment - Unrestricted
Fund - Income may be
used to address ever-
changing community need.
Now, and forever.*



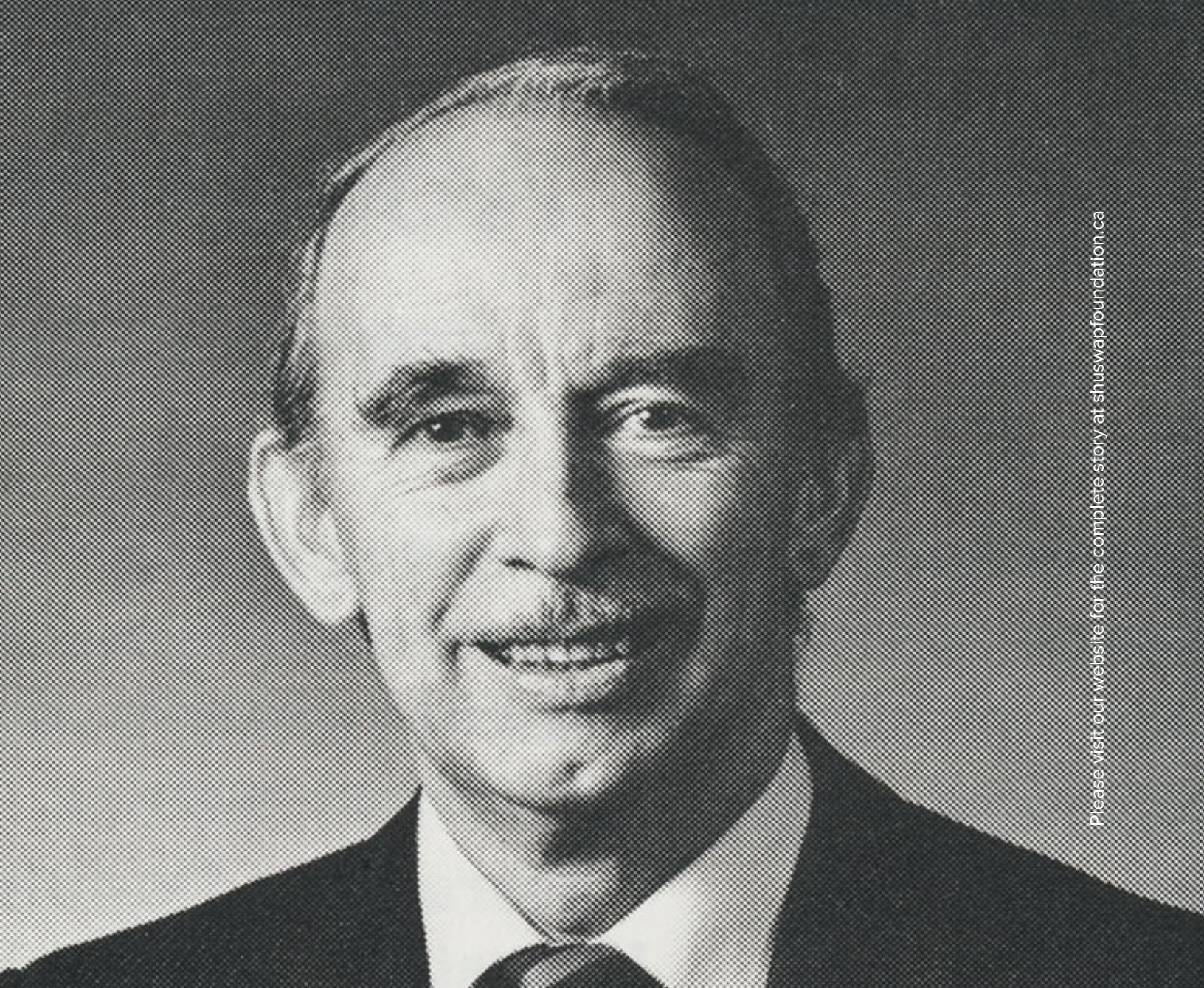
*Sholinder Family Endowment - In
alternating years, the Bursary
will be awarded to student
who intends to pursue post-
secondary education or training
in a vocation or a skilled trade, or
a student who intends to pursue
post-secondary education or
training who has demonstrated
excellence in sports.*

We are truly inspired to work with so many generous supporters, all of whom share our vision of building a stronger, more resilient community for everyone, for now, and forever.

DONOR STORIES

This year, we are honored to profile Howard Earl Johnston, Charlotte Hunter, Anneli Long, Salmon Arm Folk Music Society, and Eagle Bay Community Hall. We hope that you are as moved by their stories as we are.

To each and every Shuswap Community Foundation donor and fundholder: we hope you know how much you mean to us and the community that you support!



Please visit our website for the complete story at shuswapfoundation.ca



Spring 2020 - Larch Hills Nordic Society - Larch Hills Trail Lighting project -



Spring 2022 - Ageing with Ease in Revitalization of the Seymour Arm C

BOARD DISCRETION FUNDS - The most flexible of gifts

FUND NAME: Howard Earl Johnston Memorial Endowment

FUND PURPOSE: Board Discretion

After Howard Johnston's peaceful passing at the Shuswap Lake General Hospital on June 5, 2001 his wife of 45 years, Dale Shuko established an Endowment Fund in his memory with the Shuswap Community Foundation. Dale wanted this to be a discretionary fund where the Directors of the Foundation allocate the proceeds to areas of greatest need.

Howard a man of extraordinary intelligence, many gifts and a life of public service had suffered from dementia for ten years. His is a remarkable story.

Howard and his twin sister Lois were born June 13, 1928 in Deep Creek and were the second set of twins born to Andrew and Olga Johnston. The first set of twins, Benjamin and Richard became farmers at Deep Creek. But Howard chose a different path. The dinnertime discussions about farmers led Howard to join the Social Credit movement when he was 16. He attended A.L. Fortune in Enderby, graduated from Salmon Arm Secondary then entered Victoria Normal School. For one year in Enderby he had Leonid Ignatieff (uncle to Michael Ignatieff) as a teacher who encouraged him to pursue further education. Years later, Howard, who was teaching at SASS, recognized the same passion for politics in one of his own students and encouraged Cindy Derkaz to become involved in politics and community service.

Howard and Dale met in Monte Lake where they both taught school. Once Howard had his BA they married on August 15, 1956. Howard followed Mr. Ignatieff's advice and continued his B.Ed. and M.Ed. at UBC. Here he was involved in several clubs, among them: Drama, University Singers, Fencing and the Social Credit Club. He also received an Academic Diploma from Institute of Education, University of London, U.K.



Rural Communities Society -
Community Hall

List of project funders



Spring 2021 - Shuswap Hvt and Trail Alliance Society - Digital
Infrastructure Improvements

See our 2020-21 Community Report for the full list of project funders

Page 7



Charlotte Hunter

FUNDER PROFILE

FUND NAME: Charlotte Hunter Memorial

FUND PURPOSE: Donor Limitation - Scholarship

Charlotte Hunter took on the challenge of Girl Guides for a lifetime. Starting as a young girl in rural Ontario she joined as a distant enrolled Girl Guide. Her real involvement with Girl Guides started twenty years later when her own daughters, Danielle, and Christine, joined Sparks, then moved on to Brownies and Guides.

She began as a parent with a talent to create treasures and crafts, and a willingness to share. Her talent to connect with the other girls was noticed by other leaders and she was encouraged to step up as a leader. She did, following her daughters through the program all the way to Path Finders and Senior Branch.

Charlotte enjoyed the time with the girls doing the Girl Guide program work – crafting, selling cookies, and going on week-long International Spirit of Adventure Rendezvous camps. The camp in Mexico City was the most memorable.

Well respected by her peers, Charlotte was further encouraged to work behind the scenes by managing and auditing the finances of the local units. She progressed through the local executive, eventually becoming District Commissionaire. Her quiet, gentle personality and willingness to take on new challenges was recognized by all, and she was awarded many Girl Guide awards, not the least of which was the Book of Honor.

When her time with the girls was over Charlotte retired to the local Trefoil Guild, enjoying their monthly luncheons. She also participated in many of their crafting projects – hospital teddy bears for young patients, lap blankets for the elderly, and crafts for Santa Anonymous. Charlotte thoroughly enjoyed her time in Girl Guides, but she really treasured the people she met and worked with – The Sisterhood.

With this endowment and scholarship, the Hunter family, in memory of Charlotte, wish to challenge the young women of our community to strive to be more than they think they are capable of being.

FUNDER PROFILE

FUND NAME: Anneli Long - Deo Lutheran Endowment

FUND PURPOSE: Donor Limitation

Born in Helsinki, Finland, Anneli Long arrived in Salmon Arm with her family in 1962. Anneli and husband Chris had owned and managed a wholesale nursery business in Finland but were concerned about Russia's intentions. Shortly after their arrival in Salmon Arm, they established Paloranta Nurseries, which was located where Lakeshore Road becomes the Canoe Beach Road, NE. Branches were established in Vernon, Kamloops, and Prince George. For several years she also wrote a column for a major Finnish newspaper depicting farm life in Canada.

Always interested in her community and a lover of nature, she developed a "Save the Bay" proposal. Her plan ensured that everyone would always be able to enjoy the natural beauty of the Salmon Arm Bay.

Anneli enjoyed sketching and painting. She was a long-time member of the Salmon Arm Sketch Club and attended art courses in Banff and Mexico. She was also a founding member of the Finns of the Shuswap organisation. As well, she enjoyed travelling, classical music, ballet, and gardening. She raised three daughters, Mirjami, Helena, and Susan, and one son, Michael.

Anneli bequeathed property to the Deo Lutheran Church in Salmon Arm. The land was sold, and in February 2017 some of the funds generated were used to create the Anneli Long/Deo Lutheran Endowment. The fund will disburse grants at the discretion of the directors of the foundation to non-profit charitable organisations in the Shuswap in support of social justice, including programs for those in need and the alleviation of poverty.



Anneli's Fund has supported projects from Shuswap Area Family Emergency Society (Kitchen Reno in 2020 & Pet Shelter For Families Impacted By Violence or Trauma in 2021 - phot at right) as well as Habitat for Humanity's expansion of the Shuswap Lions Manor in Sorrento.



PARTNERSHIP PROFILE

FUND NAME: Salmon Arm Folk Music Society Endowment

FUND PURPOSE: Donor Limitation - Scholarship



A unique set of circumstances resulted in a win-win-win for Salmon Arm Folk Music Society (SAFMS) and Shuswap Community Foundation (SCF).

In 2021, while collaborating on a project with the Prince George Community Foundation, SCF's Manager, Roger Parenteau, learned of the Canada Cultural Investment Fund, which encourages the private sector to help arts and heritage organizations be better rooted and recognized in their communities. The government provides matching funds of up to one dollar for every dollar raised from private donors to create endowment funds or to increase existing ones.

SAFMS has an endowment with SCF. Roger called David Gonella, Executive Director at SAFMS. David's initial thought was 'this is too good to be true, that such a source of funds to grow our endowment is available.' He contacted his Board of Directors threw their full support behind the project, Then David, Holly Ketter, one of SAFMS's grant writing team and Volunteer Coordinator, and Roger at SCF gathered the necessary information. An application for matching funds was submitted.

The result? SAFMS received an infusion of close to \$10,500 into their endowment fund.

David is effusive in his praise of all involved for enabling the two organizations to deepen their partnership on the scholarship endowment. "This affiliation represents another layer of the great service SCF provides to the community at large."



Salmon Arm Roots and Blues Festival

PARTNERSHIP PROFILE - Municipal Granting

A shared goal of improving life for the people of the Shuswap has been the foundation of an ongoing partnership with The City of Salmon Arm and District of Sicamous and their respective discretionary granting programs.

Each year, Mayors and Councils allocate funding to support projects and organizations in these communities. SCF volunteers then act as expert evaluators and impartial adjudicators.

SCF is immensely proud of partnerships such as these that help deepen our impact in the various areas of the Shuswap.

Please visit: <http://shuswapfoundation.ca/grants/community-grants/> for more information.



FUNDER PROFILE - City of Salmon Arm Grants in Aid

Applicant Group	Project	\$ Approved
Shuswap Association for Community Living	municipal utilities for 2 group homes	\$3,300
SABNES	Summer student to staff the Brighthouse Nature Centre	\$3,400
2021 Shuswap Music Festival	venue rentals for virtual performances	\$1,500
Shuswap String Orchestra Society	To keep the orchestra functioning at this difficult time.	\$2,350
Voice of the Shuswap Broadcast Society	Tower rental for space for the antenna.	\$3,500
Shuswp Food Action Society	community garden/farmers market manager	\$3,000
Shuswap District Arts Council	Wednesday on the Wharf 2022	\$1,100
Shuswap Association of Writers	Young Writers Programme	\$1,400
Salmon Arm Sockeyes	Lane fees	\$900
Shuswap Theatre Society	Replace flame retardant curtains	\$2,600
The Salmon Arm and Shuswap Lake Agricultural Association	Maintenance and security	\$6,034
Salmon Arm Museum & Heritage Association	Dr. Mary Thomas exhibit	\$6,828
Columbia Shuswap Selkirks Swim Club Society	Pool rental costs and coaching	\$900
Kamloops Symphony Society	Concerts in Salmon Arm	\$1,200
Salmon Arm Minor Hockey Association - u13 tournament committee	Tournament costs	\$5,000
Play Shuswap	Community Outreach	\$4,000
SAS Dry Grad 2022	dry grad 2022	\$750
Shuswap Youth Soccer Association	Storage Container	\$3,750
Rise Up Indigenous Wellness Society	One Heart, One Mind, One Drum	\$2,400

FUNDER PROFILE - District of Sicamous Community Service Grants



Applicant Group	Project	\$ Approved
Rise UP Indigenous Wellness Society	To provide a series of outdoor workshops in the Sicamous area focused on Indigenous youth and families.	\$9,700
Sicamous Preschool Society	To help compensate for operational losses due to COVID19.	\$2,500
Eagle Valley Transportation Society	Vehicle nsurance, general liability insurance.	\$6,825
Sicamous and District Museum & Historical Society	To purchase archival supplies. Develop online resources to share archival collections. Purchase PastPerfect Museum Software.	\$5,200
Eagle Valley Community Support Society	Completion of a multi-purpose room upgrade	\$10,000



Dr. Mary Thomas Exhibit



AGENCY FUNDER PROFILE

FUND NAME: EAGLE BAY COMMUNITY HALL

Over the past 72 years the Eagle Bay Community Hall has provided a venue that supports the interests and activities of the residents of Eagle Bay.

With over 400 members, the hall hosts both monthly events such as coffee houses and holiday dinners, and a wide variety of weekly activities which keep the hall busy all year. Currently the Columbia Shuswap Regional District (CSRD) is working with the EBCA to create a new Eagle Bay Park behind the hall which will include pickle ball courts, a multi-purpose court, outdoor fitness facilities, two children's playgrounds, a picnic shelter and picnic area, and outdoor washrooms. The Park will open in 2023 and there is great anticipation in the community regarding renewed and expanded venues for the Community Association.

Incorporated on the 21 of November 1950, the association became a registered charity in 2021 and one of its first acts was to work with the Shuswap Community Foundation (SCF) to attain Agency status. We saw great value in working with the Foundation to address sustainability for the EBCA now and into the future. SCF provides a great return on our investment and brings stability to the ongoing operational challenges that face small communities. We know that we will continue to support the Foundation and, in turn, see support flowing back into our local community.





AGENCY FUNDS - Disbursements

\$778	Arts Council of the South Shuswap
\$6,150	Administration Endowment
\$1,609	Anglican Parish of Salmon Arm - Sicamous Endowment
\$506	Caravan Farm Theatre Endowment
\$1,308	Morris Okanagan Regional Library Children's Fund (Salmon Arm Branch)
\$1,931	North Okanagan-Shuswap School District Endowment
\$8,388	Okanagan College Foundation
\$1,222	SABNES Endowment
\$885	SAFE Society Endowment
\$25,101	Salmon Arm Art Gallery Endowment Fund
\$6,538	Salmon Arm College Scholarship Trust - George and Nancy Clark
\$5,639	Salmon Arm College Scholarship Trust - Len O'Neill Memorial
\$5,236	Salmon Arm College Scholarship Trust - Vicki Hitchen Memorial
\$4,115	Salmon Arm Museum and Heritage Association - Peterson Family
\$9,555	Salmon Arm Museum and Heritage Association Endowment
\$3,222	Shuswap District Arts Council Endowment
\$2,100	Shuswap District Arts Council Endowment - Blair Borden Memorial
\$457	Shuswap District Arts Council Endowment - T.O.N.A.C.
\$2,601	Shuswap Hospice Society Endowment
\$2,223	Shuswap Hospital Foundation Endowment
\$2,425	Shuswap Theatre Society Endowment
\$959	Sorrento and Area Community Health Centre
\$2,763	The Shuswap Trail Legacy Fund





A GATHERING OF GRATITUDE

A GATHERING OF GRATITUDE

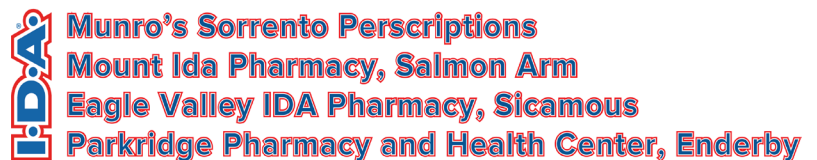
As the Covid-19 Pandemic dragged on, loneliness and isolation became epidemics of their own. The directors of Shuswap Community Foundation decided to create an event that would allow people to reconnect in a safe environment. A Gathering of Gratitude allowed Shuswap charitable organisations to get together and celebrate their togetherness by gathering in Marine Peace Park in Salmon Arm where they could showcase the work they do in their various communities. Work made possible, in part, by the generosity of the gifts donated by the foundation's fundholders. Many who attended expressed their gratitude for the work these volunteers do to enhance the quality of life in their communities.

24 organizations came and set up tents and booths. Many people who have created endowments with SCF came to meet and greet each other, the volunteers who do the work of the charitable organizations their funds support, and the public. Members of our board of directors, and staff were on hand to answer questions and explain how SCF makes a difference.

The event was a wonderful way to celebrate and learn about the many volunteer not-for-profit organizations in the Shuswap" and afforded a chance to thank SCF and its donors for making their work possible.

We acknowledge the generosity of the following sponsors that allowed SCF to celebrate the organizations that work every day to improve the quality of life for everyone in the Shuswap.

GOLD SPONSORS



SILVER SPONSORS



Village West Developments



BRONZE SPONSORS





MCGUIRE LAKE MEMORIAL WALKWAY

FUND NAME: MEMORIAL WALKWAY FUND

FUND PURPOSE: Board Discretion - Salmon Arm Projects



MCGUIRE LAKE
MEMORIAL
WALKWAY

Nick and Connie Proteau	for	Michael R. Proteau
Loxton family	for	Bob and Darcy Loxton
Allison MCCollum	for	Catherine Alice Dubie
Stephen Smith	for	Julie Ann Stier
Clyde and Freda Bostrom	for	The Bostrom Family
Ray and Edna Gowriluk	for	Ray and Edna Gowriluk
Tera Pietz	for	Victor and Vera Kavolinas
Heather Flockhart	for	Albert and Mary Bianco
Michael and Leah Quintal	for	Linda Louise Quintal
Cheryl and Joe Kennedy	for	Julie Anne Stuart
Cheryl and Joe Kennedy	for	selves - blank
SCF	for	Al Neale and Beryal Herden
Shelley Hrynyk	for	Stan Pollard
Harrison Family	for	Ben and Althea Harrison
Sheila Auch	for	Ralph and Christina Bartman
the Estate of Romanie Green	for	Norton and Romanie Green
Jan Loos	for	Jan and Beverly Loos
Terry Gilroy	for	Jenny Bowser
Carol Swank	for	Fred Yuichi and Yoshiko Yamamoto
Pamela Olson	for	Arvid Olson and Irene Leith olson
John Barr	for	Lorne Edmund Barr

Bricks Purchased July 1, 2021 to June 30, 2022

IN MEMORIUM

Shuswap Community Foundation lost a number of supporters over the past year. Our heartfelt condolences go out to their family and friends. They will be deeply missed.



Doris Rosemarie Farquhar



Al Neale

2021-22 DISCRETIONARY GRANTS - FALL 2021

Organization Name	Project Name	Donor Funds	Amount Awarded
The Kamloops Wildlife Park Society	Project: Duck, Duck, Fence	Margaret Haney Fund	\$19,000
BC SPCA	2021 Kamloops Subsidised Spay/Neuter Program for Low Income Families	Margaret Haney Fund	\$6,500
Habitat for Humanity Kamloops Society	Shuswap Lions Manor Expansion	Wendy and Rod Charlebois Endowment Margaret and Barry Stokes Family Fund Paul and Jane Burrows Endowment Margot Hewitt, Dr. Melany Dyer Endowment John and Ingrid Monk Endowment Anneli Long/Deo Lutheran Endowment Turner Orchards Endowment Betty Jean Derkaz Memorial Fund Lloyd and Dorothy Askew Family Endowment Sorrento Lions Club - Catherine Dilworth Memorial Endo Maureen Brass Memorial	\$24,000
Turtle Valley Donkey Refuge Society	Main Barn Concrete Slab	Margaret Haney Fund	\$16,500
Habitat for Humanity Kamloops Society	Habitat Kamloops Handyman Program	Browne Johnson Legacy Bill and Mary Douhaniuk Endowment Lloyd and Dorothy Askew Family Endowment	\$8,000
Eagle Valley Senior Citizens Housing Society	Haven Accessible Walk-in Shower Upgrade	Eagle Valley Communities Endowment John and Ingrid Monk Endowment Rod Bailey Endowment Kyllo Family Endowment Maurice Gillis Memorial Endowment C. Norman Barber Endowment Lloyd and Dorothy Askew Family Endowment	\$12,000
Shuswap Food Action (2018) Society	Jackson Junction's Bussin' Kitchen	Wainwright-Mobley Memorial Joe and Bobbi Johnson Schools Legacy	\$6,100
Shuswap Cycle Club	South Canoe Winter Grooming	Gerry and Rita Chu Family Endowment Ian and Wendy Clay Endowment Mickey Petersen Endowment	\$2,500
The Adams River Salmon Society	Salmon Education and Community Outreach at events and Schools in the Shuswap	Potter/Edgell Family Endowment Robin Jackson Environmental Endowment SASCU Community Endowment	\$8,000
Rise Up Indigenous Wellness Society	Land is our Medicine	Lloyd and Dorothy Askew Family Endowment Molly Bell Endowment Gordon Priestman Memorial Endowment* Gary W. Carder Endowment Fund Edna and Dan MacQuarrie Family Endowment Rick and Linda Hirtle Family Endowment	\$11,600

* - Indicates that fund was established as part of a matching funds program

Permaculture Demonstration Area - Shuswap Community Teaching Garden -
Funded through SCF's
Neighbourhood Small Grants Program
shuswapfoundation.ca/grants/neighbourhood-small-grants/



2020-21 DISCRETIONARY GRANTS - SPRING 2022

Organization Name	Project Name	Donor Funds	Amount Awarded
Shuswap Day Care Society	Library Renovation	Browne Johnson Legacy Nina Dickins Family Endowment Jennifer Phillips Memorial White/Johnson Endowment*	\$3,000
Sorrento Memorial Hall Association	Kitchen Equipment Upgrade	Margaret and Barry Stokes Family Fund Reid/Wright Families Endowment Tom and Elsie Brighthouse Family Endowment Enid Finn Memorial Ulrich and Margarete Schoene Family Endowment* Lynda Nicholson, Allen Ferguson Endowment* Sheldon and Karen Pukas Family Endowment* Shuswap Coordinating Training Society Endowment	\$10,000
AWE Society (Ageing With Ease in rural communities)	Seymour Arm Community Hall - It's Our Everything - Revitalization Project	Ev Painter Endowment Nancy and George Clarke Memorial Fund Derkaz/Derby Family Endowment Community Fund Harry, Thelma and Patricia May Endowment* Henderson Family Endowment Howard Johnston Memorial Endowment* Potter/Edgell Family Endowment Ian Duncan and Maureen Stickney Endowment* Gordon and Bev Marshall Family Endowment Don and Irene Rogers Endowment* Lynda Nicholson, Allen Ferguson Endowment* Dave Neale Memorial and Trinity Neale Endowment David Wood and Jean Bleakley Endowment Earl and Muriel MacKenzie Family Endowment	\$25,000
Eagle Bay Community Association	Community Hall Electrical Upgrade	Marian and Ralph Segreto Endowment Jennifer Phillips Memorial Dr. Tess Trueman Endowment Founders	\$19,000
Shuswap Music Festival	Shuswap Music Festival 2022	Geoff and Judith Benson Family Endowment	\$1,500
Salmon Arm Museum and Heritage Association	Portable Exhibition Walls	Memorial Walkway Allan and Rosemary Wilson Preserving Memories Fund Doug and Donna Adams Family Endowment Bob and Marlene Robertson Family Endowment Community Fund	\$7,048
Shuswap Children's Association	Creating Safer Places to Improve the Quality of Life of Youth with Diverse Genders and Sexualities	Youth Endowment SASCU Youth Endowment	\$1,300
Shuswap Theatre Society	Ultraviolet-C air disinfection systems	Geoff and Judith Benson Family Endowment Landers Family Legacy	\$3,897
Good Samaritan Canada	Growing for the Community	Albert and Muriel Spencley Memorial Endowment Catherine and Joseph Shay Memorial Endowment Lloyd and Dorothy Askew Family Endowment	\$4,050
Shuswap Hut and Trail Alliance Society	East Canoe Creek Bridge - Larch Hills Traverse Ida View Recreational Trail Project	Tom Pugh Memorial Letham Family Endowment Paul and Elvi Pukas Family Endowment Carson/Murray Endowment	\$8,000
First United Church (Voice of the Shuswap Broadcast Society)	Radio Skills Online	Higgins Family Endowment Brooke, Downs, Vennard LLP Endowment Chapman Family Endowment Catherine and Joseph Shay Memorial Endowment Brooke, Jackson, Downs Endowment	\$4,984
Eagle Valley Arts Council	Electrical Upgrades	Nancy and George Clarke Memorial Fund Pat and Peter Cummings, George and Eva Kassa, Patti and Bryan Kassa Endowment Aileen Gentles Memorial Endowment Fred and Alice Duck Endowment* Doreen McCaig Memorial Endowment Rosemarie's Fund	\$15,000
Eagle Valley Community Support Society	EVCSS Commercial Kitchen Wares Fit Out	Nels and Nellie Latta Memorial Endowment* Albert and Muriel Spencley Memorial Endowment Paul and Elvi Pukas Family Endowment Anonymous Eagle Valley Seniors Endowment	\$3,000
Literacy Alliance of the Shuswap Society	Dolly Parton Imagination Library	Ev Painter Endowment	\$10,547
Shuswap District Arts Council (Shuswap Association of Writers)	Word on the Lake Writers Festival	Geoff and Judith Benson Family Endowment	\$3,500
Kamloops Symphony Society	A Sense of Wonder - Kamloops Symphony in Salmon Arm	Geoff and Judith Benson Family Endowment	\$1,500
Eagle Valley Community Support Society (Rooted in Wellness)	Rooted In Wellness	Community Fund Wainwright-Mobley Memorial	\$11,495
Eagle Valley Community Support Society (Malakwa Playschool Society)	Malakwa Playschool Interior Update Project	Higgins Family Endowment Karen Angove Endowment Rob Nash Memorial Endowment Youth Endowment	\$8,000

* - Indicates that fund was established as part of a matching funds program

2021-2022 DONOR DIRECTED GRANTS

<i>Recipient Organization</i>	<i>Amount</i>	<i>Fund Name</i>
Trustees of the Salmon Arm College Scholarship Fund	\$9,278	Al Neale Bursary
Canadian Mental Health Association, Shuswap/Revelstoke Branch (CMHA)	\$1,352	Beryl Herdan and Al Neale Endowment (CMHA)
Canadian Cancer Society -Salmon Arm Unit	\$945	Bill MacDonald Memorial
First United Church	\$578	Braby Family Endowment
North Okanagan-Shuswap School District No. 83	\$559	Brad Jackson Scholarship
Canadian Mental Health Association, Shuswap/Revelstoke Branch (CMHA)	\$1,236	Canadian Mental Health Association - Shuswap/Revelstoke Branch
North Okanagan-Shuswap School District No. 83	\$368	David John Stratton Memorial Bursary
North Okanagan-Shuswap School District No. 83	\$639	Dearing Family Endowment
Okanagan Historical Society, Salmon Arm Branch	\$550	Denis Marshall and Geoff Leech Memorial Endowment
North Okanagan-Shuswap School District No. 83	\$3,313	Dorothy Longdo Memorial
Salmon Arm Museum and Heritage Association	\$591	Doug and Donna Adams Museum Endowment
Shuswap Hospital Foundation	\$826	Douglas Burkitt Memorial
BC SPCA - Shuswap Branch	\$79,572	Elisabeth Thomi Endowment
Trustees of the Salmon Arm College Scholarship Fund	\$914	Eve and Christopher Wright Scholarship
North Okanagan-Shuswap School District No. 83	\$500	Fowler/Gomme Family Endowment
Shuswap Music Festival Society	\$1,558	Fowler/Gomme Family Endowment
North Okanagan-Shuswap School District No. 83	\$602	Frank and Rita Smuin Memorial Bursary
North Okanagan-Shuswap School District No. 83	\$253	Glenn and Judith Borthistle Endowment
North Okanagan-Shuswap School District No. 83	\$597	Hana and Glen Larson Endowment
UBC Okanagan	\$4,215	Henders on Award in International Development
Salmon Arm Museum and Heritage Association	\$2,836	Jack and Edith Stead Endowment
Shuswap Hospital Foundation	\$709	Jack and Edith Stead Hospital Endowment
Thompson Rivers University Foundation	\$1,591	Janet Pattinson - Shuswap Naturalist Club Bursary
BC SPCA - Shuswap Branch	\$2,755	Julia/Fred Endowment
Children's Wish Foundation of Canada	\$2,755	Julia/Fred Endowment

2021-2022 DONOR DIRECTED GRANTS

<i>Recipient Organization</i>	<i>Amount</i>	<i>Fund Name</i>
The War Amputations of Canada	\$2,755	Julia/Fred Endowment
School District #58 (Nicola - Similkameen)	\$2,858	Larson Family Endowment
North Okanagan-Shuswap School District No. 83	\$557	Lisa Rolland Children's Literacy
Shuswap Hospital Foundation	\$5,170	Lloyd and Joy Johnston Family Endowment
Shuswap Recreation Society	\$2,784	Lloyd and Joy Johnston Family Endowment
North Okanagan-Shuswap School District No. 83	\$2,260	Margaret and Ronald Willey Memorial - (School District 83)
North Okanagan-Shuswap School District No. 83	\$1,686	Morris Bursary for Excellence in Mathematics
North Okanagan-Shuswap School District No. 83	\$1,165	Nayki/Greer Family Endowment
BC SPCA - Shuswap Branch	\$2,760	Nayki/Greer Family Endowment
Trustees of the Salmon Arm College Scholarship Fund	\$2,000	Nick and Marilyn Brown Family
Shuswap Hospital Foundation	\$774	Pat and Al Munholland Family Endowment
North Okanagan-Shuswap School District No. 83	\$847	Porteous/Mullen Bursary Endowment
North Okanagan-Shuswap School District No. 83	\$454	Ralph and Jean Smith Memorial Endowment
Shuswap Area Family Emergency Society	\$1,095	Ready Family Endowment
Shuswap Hospice Society	\$1,095	Ready Family Endowment
North Okanagan-Shuswap School District No. 83	\$1,269	Salmon Arm Kinsmen and Kinette Fund
North Okanagan-Shuswap School District No. 83	\$987	Salmon Arm Secondary Athletic Endowment
Trustees of the Salmon Arm College Scholarship Fund	\$1,082	Sansom Family Endowment Fund
North Okanagan-Shuswap School District No. 83	\$760	Shane Gorner Memorial Endowment
School District #53 (Okanagan Similkameen)	\$1,000	Sharon Besler and Robert Baker Endowment
BC SPCA - Shuswap Branch	\$6,535	Shuswap Branch, B.C.S.P.C.A. Endowment
North Okanagan-Shuswap School District No. 83	\$434	Shuswap Volunteer Firemens Association Cody Davies Memorial Bursary
North Okanagan-Shuswap School District No. 83	\$465	Steve Heal Memorial Scholarship
Trustees of the Salmon Arm College Scholarship Fund	\$862	Tomas Idzan Memorial Bursary
North Okanagan-Shuswap School District No. 83	\$930	Walter Ellaschuk Memorial Bursary

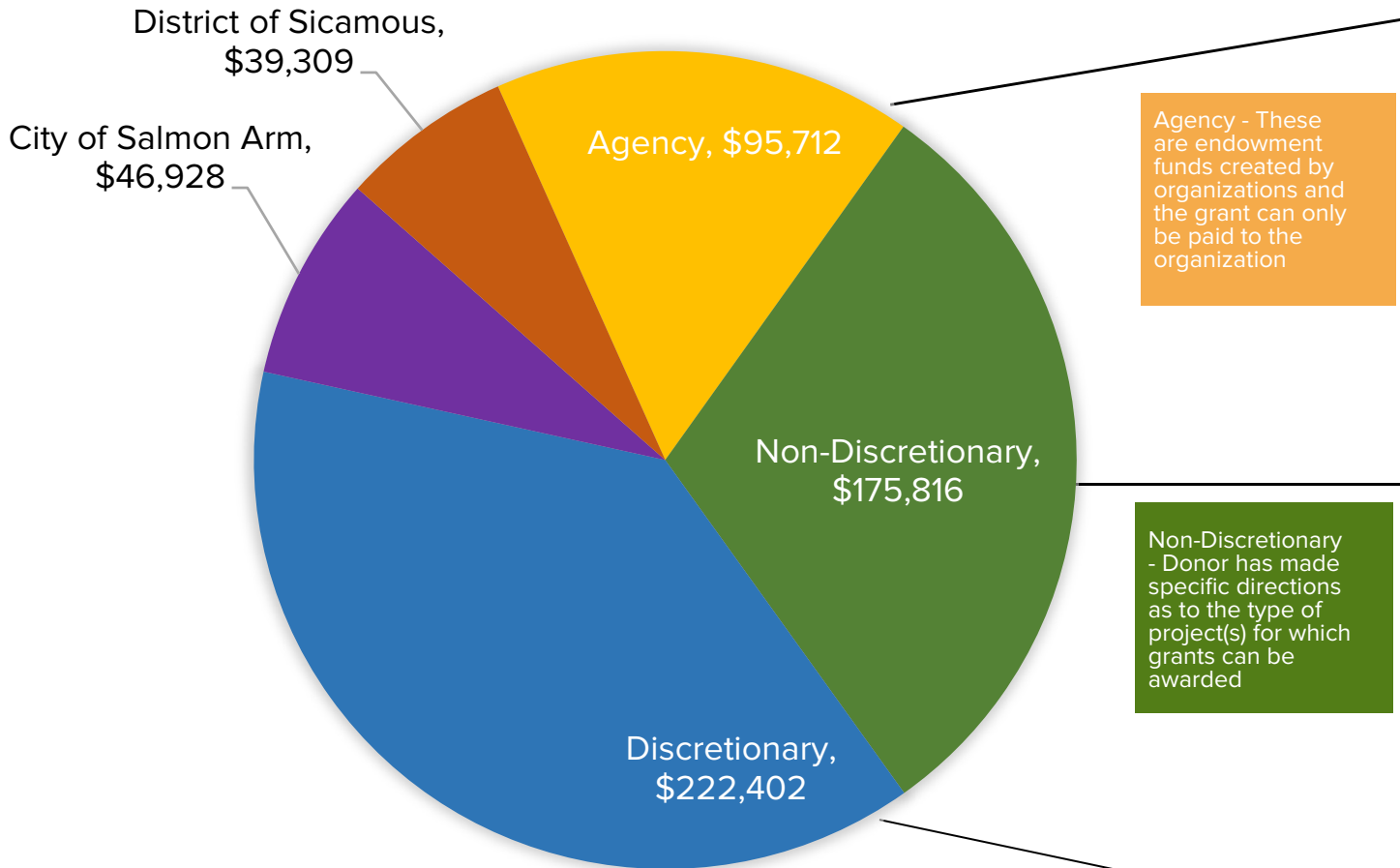
FINANCIAL REPORT

SCF Funds Distributed 2021-22 \$493,931

City of Salmon Arm Grants in Aid \$46,928

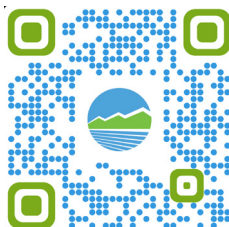
District of Sicamous Community Service Grants \$39,309

Total: \$580,168



Full financial reporting is available on our website at:
<http://shuswapfoundation.ca/about-us/publications/>

Or scan the image to link to our website



Discretionary Funds (DF) are made up of:

Board Discretion - Donor has placed no restrictions on the types of projects for which grants can be awarded

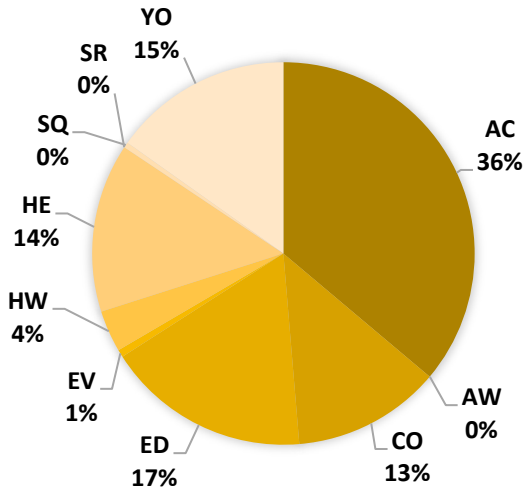
Donor Preference - Donor has expressed a preference for type(s) of projects grants can be awarded, but if no such project exists, the board can decide which projects to award grants

Donor Limitation - Donor has placed a limitation on the type of projects for which grants can be awarded

Fund Distribution

AGENCY FUNDING

Total Available Agency Funding: \$95,712



AC	\$34,589
AW	\$0
CO	\$11,995
ED	\$16,513
EV	\$611
HW	\$3,371
HE	\$13,670
SR	\$0
SQ	\$443
YO	\$14,520

Funding by Area



Arts & Culture

Arts & Culture (AC) \$42,897



Animal Welfare

Animal Welfare (AW) \$147,422



Community

Community (CO) \$52,023



Education

Education (ED) \$51,031



Environment

Environment (EV) \$18,941



Health & Wellness

Health and Wellness (HW) \$31,714



Heritage

Heritage (HE) \$25,848



Seniors

Seniors (SR) \$25,804



Social Equality

Social Equality (SQ) \$46,174



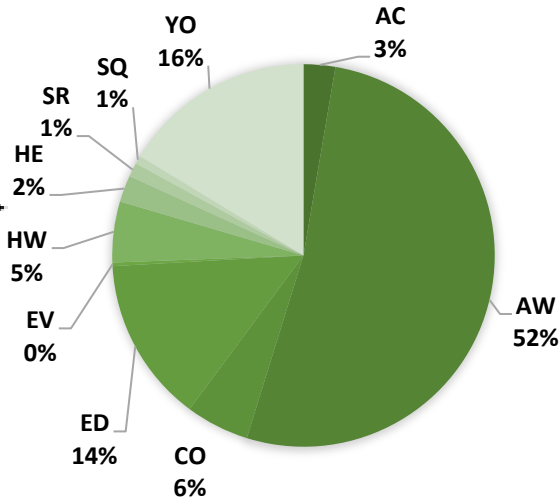
Youth

Youth (YO) \$52,078

Total 2020-21 Grants \$493,931

NON-DISCRETIONARY FUNDING

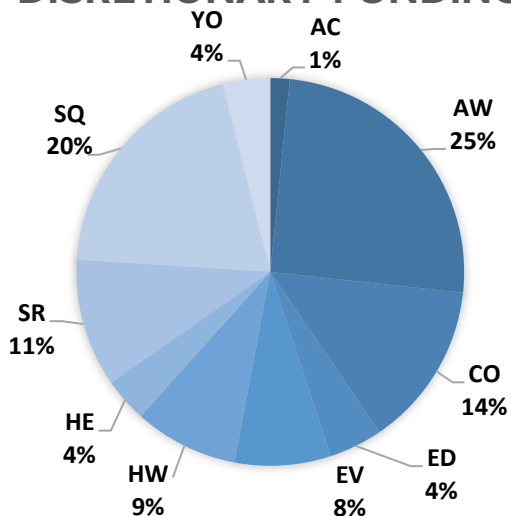
Total Available Discretionary Funding: \$175,602



AC	\$4,708
AW	\$91,622
CO	\$9,427
ED	\$24,534
EV	\$530
HW	\$9,043
HE	\$3,977
SR	\$2,070
SQ	\$1,198
YO	\$28,708

DISCRETIONARY FUNDING

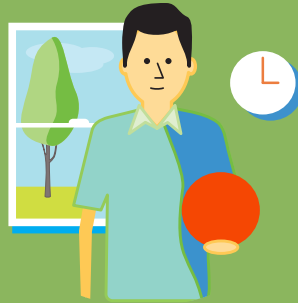
Total Available Non-Discretionary Funding: \$222,617



AC	\$3,600
AW	\$55,800
CO	\$30,600
ED	\$9,984
EV	\$17,800
HW	\$19,300
HE	\$8,200
SR	\$23,734
SQ	\$44,534
YO	\$8,850

WHAT DO YOU WANT YOUR LEGACY TO BE?

A donor wishes to support a cause dear to them



Total donations to SCF in 2021-22

\$533,038

SCF Staff work with donors to fulfil this vision



Capital Fund Value as of June 30, 2022

\$10,669,296

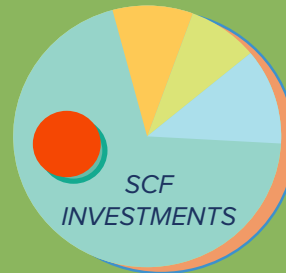
We add these gifts to our endowed investments



Rate of Return in 2021-22

-11.27%

These investments generate income over time



We allocate a portion of the income to grants



2022-23 Distribution Rate

4.25%

Grants can take the form of scholarships, operational funding for Agency fundholders, or project grants



2022-23 Grant Reserve

\$494,260

SCF Board Of Directors - 2021 - 22

Bryan Kassa -
President



Ralph Segreto -
Vice President



John White -
Treasurer



Sharon Gavel -
Secretary



Kathryn Vennard



Judy Moore



Ineke Hughes



Kris Jensen



Lindsay Wong



Paige Hilland



Melany Dyer



Laurie Page



Staff



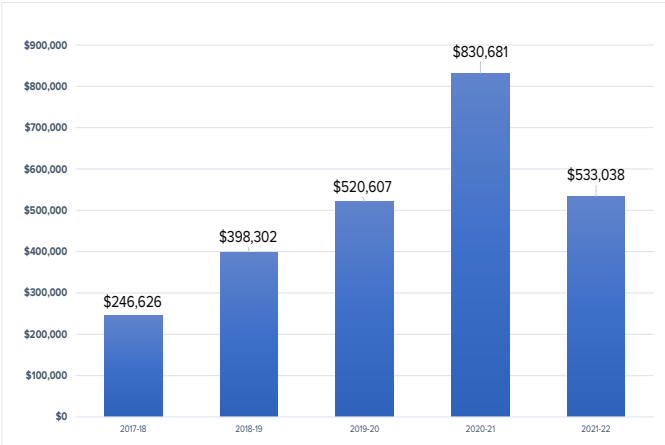
Manager: Roger Parenteau



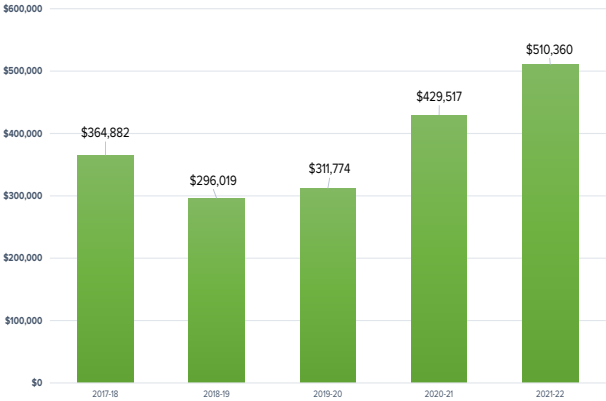
Administrative Assistant: Robyn Keating

5 YEARS AT SCF

SCF 5 YEAR DONATIONS



5 YEAR SCF Grant Disbursements
By percentage and \$ amount



28 YEARS OF SCF
190 Funds



More than **\$4.2M**
GRANTED TO SHUSWAP
COMMUNITIES SINCE 1994





SHUSWAP
COMMUNITY
FOUNDATION

**CONNECTING PEOPLE OF THE SHUSWAP
WITH THE CAUSES THAT MATTER IN OUR COMMUNITIES**

SHUSWAP COMMUNITY FOUNDATION

P: 250.832.5428

E: info@shuswapfoundation.ca

W: www.shuswapfoundation.ca

@ShuswapFoundation



@WeAreSCF



MAILING:

PO BOX 624

SALMON ARM, BRITISH COLUMBIA V1E 4P9

PHYSICAL:

102 - 160 HARBOURFRONT DRIVE NE

SALMON ARM, BRITISH COLUMBIA V1E 3M3

A proud member of



COMMUNITY
FOUNDATIONS
OF CANADA
all for community

FONDATIONS
COMMUNAUTAIRES
DU CANADA
ensemble pour tous

Scan this code with
your phone to view
SCF's 2022 Annual
Community Meeting

